

**MICRO SWITCH**

A DIVISION OF MINNEAPOLIS-HONEYWELL REGULATOR COMPANY  
PREPONT, ILLINOIS

FED. MFR. CODE 91929

# SWITCH - BASIC

CATALOG LISTING  
**5SE1-3**

5SE1-3

PAGE 1 OF 1

M

DRAWING NUMBER

11

ISSUE

X

REPLACES

RELEASE NO.

CHECK

CHECK

CHECK

CHECK

CHECK

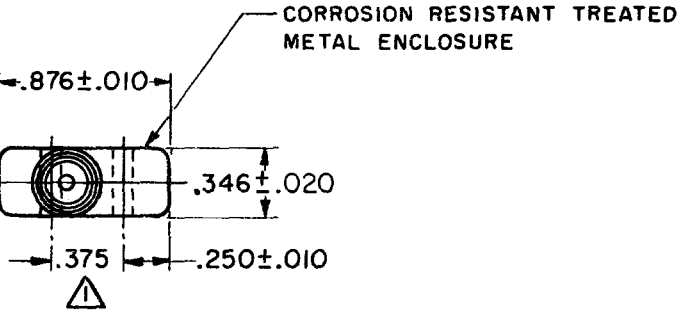
CHECK

CHECK

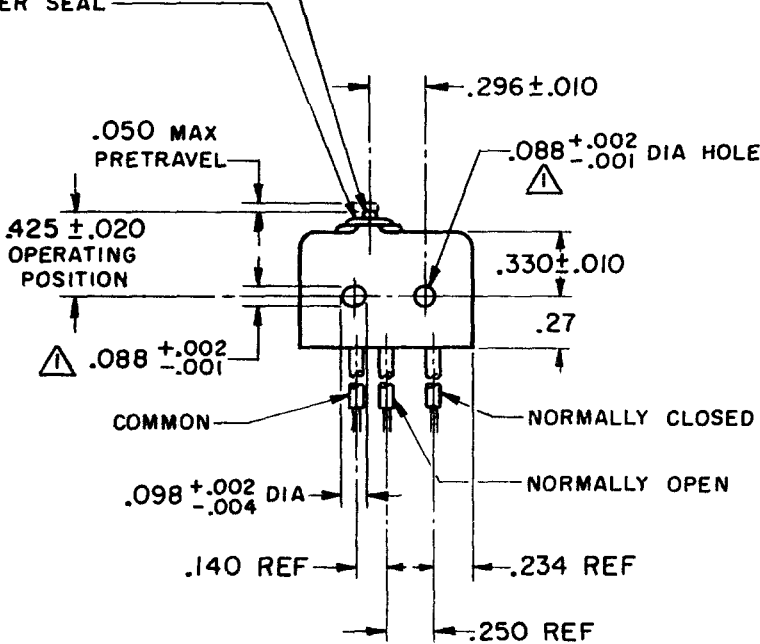
CHECK

CHECK

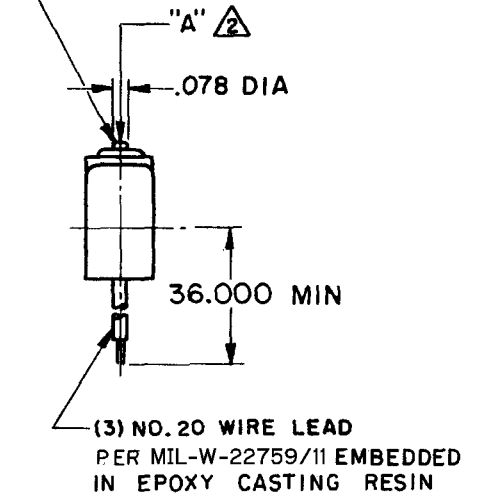
ELASTOMER PLUNGER SEAL



CORROSION RESISTANT STEEL PLUNGER



.070 SPHERICAL RADIUS



**REVISIONS**

A	CO16449
13	K L B APR 62
B	CO-34213
25	J A L SEPT 74
C	CO 51463-D
16	WJM JUL 82
D	CO57041A
21	CJH MAR 85
E	OBSDWG CO76001
28	C S L JUL 93
F	REINSET CO79228
7	S A D DEC 94
G	CO94274
	DLM MAR 99

**NOTE -**

- △ - MOUNTING HOLES WILL ACCEPT .087 MAX DIA PINS OR SCREWS ON .375 ± .002 CENTERS
- △ - ACTUATION IN LINE WITH ARROW "A" IS RECOMMENDED
- △ - WEIGHT OF SWITCH ONLY IS .26 OZ MAX. WEIGHT OF SWITCH WITH WIRE LEADS IS 1.40 OZ MAX

THIS DRAWING COVERS A PROPRIETARY ITEM AND IS THE PROPERTY OF MICRO SWITCH, A DIVISION OF MINNEAPOLIS-HONEYWELL REGULATOR CO. THIS DRAWING IS NOT TO BE COPIED OR USED WITHOUT THE APPROVAL OF MICRO SWITCH.

CHARACTERISTICS	
OPERATING FORCE	5 - 17 OZ
RELEASE FORCE	4 OZ MIN
RELEASE TRAVEL	.004 MIN
DIFFERENTIAL TRAVEL	.004 MAX
OVERTRAVEL	.003 MIN

ELECTRICAL DATA	
CONTACT ARRANGEMENT S P D T	
250 VAC ----- 5 AMP	
30 VOLTS DC RATING	
INDUCTIVE	SEA LEVEL ----- 3 AMP
	50,000 FT ----- 2.5 AMP
RESISTIVE	SEA LEVEL ----- 5 AMP
	50,000 FT ----- 5 AMP
MAXIMUM INRUSH	----- 24 AMP

SCALE FULL	
DO NOT SCALE PRINT	
UNLESS OTHERWISE SPECIFIED	
DIMENSIONS ARE IN INCHES	
<b>TOLERANCES ARE:</b>	
ONE PLACE (.0)	± .030
TWO PLACE (.00)	± .015
THREE PLACE (.000)	± .005
ANGLES	±
WEIGHT	△ 3

FORMTEK

FO-90378

DRAWN

K L B 13 APR 62